

## DESCRIPTION

- AP-20A is high pressure gear pump with cast iron end caps and an aluminum housing.
- Standard mounting flange is **SAE A-2 bolt**.
- Standard ports are **SAE-16 inlet** and **SAE-12 outlet**.
- Standard drive shaft is **5/8" straight shaft with 5/32 key**.
- Available options include 3/4" straight shaft with 3/16" key and SAE 9 tooth spline.



## TECHNICAL DATA

- Filtration: 25 micron or better
- Oil Viscosity: 6 to 200 cSt
- Inlet Pressure: 12 to 32 psi absolute
- Temperature: Oil: -25°C to 80°C / -12°F to 175°F  
Ambient: -22°C to 55°C / -8°F to 130°F

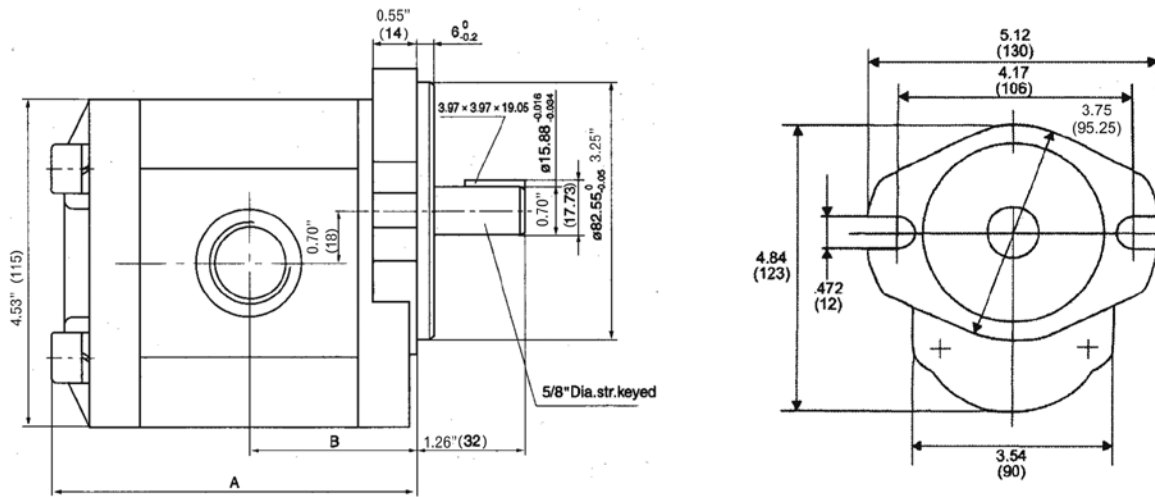
Model	GPM @ 1800 rpm	Displacement		Pressure		Speed RPM		Weight	
		cm <sup>3</sup> /rev	cu.in/rev	PSI	BAR	Min.	Max.	Lbs.	Kg
<b>AP-20A-25</b>	11.84	25	1.52	3650	250	500	3000	11.36	5.15
<b>AP-20A-27</b>	12.55	27	1.61	3650	250	500	3000	11.58	5.25
<b>AP-20A-30</b>	14.26	30	1.83	3650	250	500	3000	11.8	5.35
<b>AP-20A-32</b>	15.19	32	1.95	3650	250	500	3000	12.02	5.45
<b>AP-20A-40</b>	19.01	40	2.44	3650	250	500	3000	12.46	5.65

- Flow rate in gpm - Displacement (cu.in/rev) X speed (rpm)/231
- Volumetric efficiency % >93

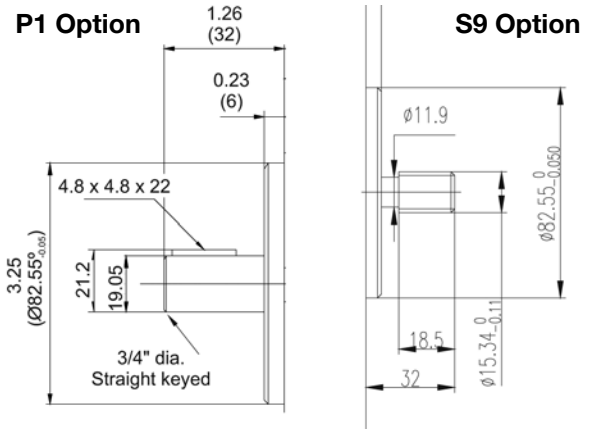
# Hydraulic Gear Pump AP-20A



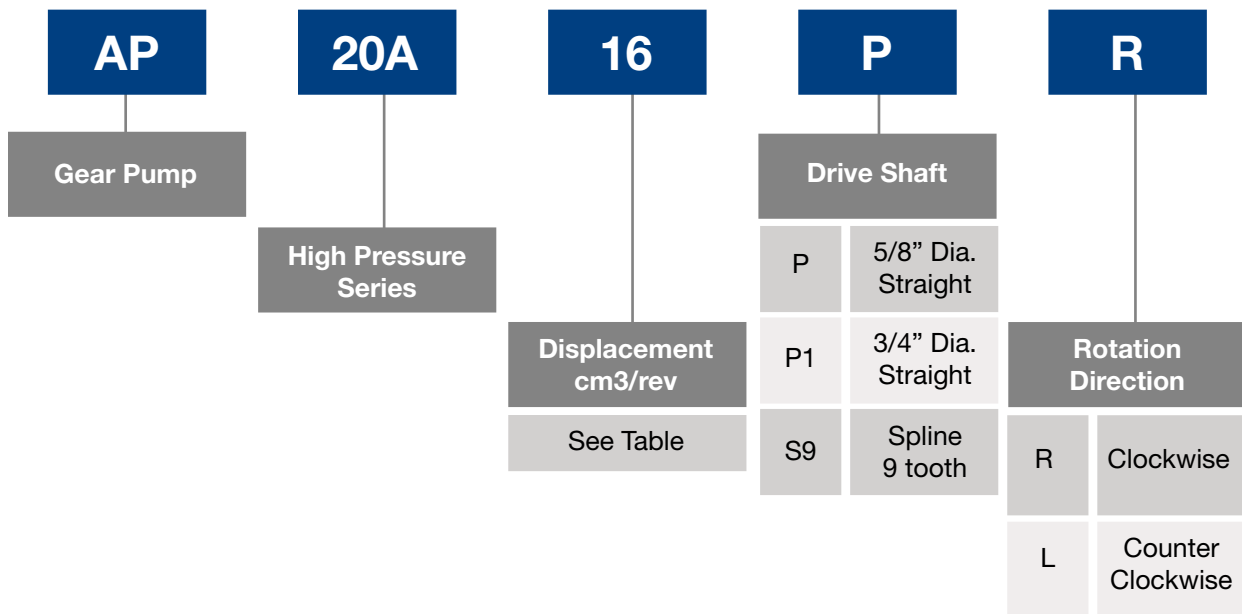
## INSTALLATION DATA



Model	A		B	
	mm	inch	mm	inch
AP-20A-25	130	5.12	62	2.44
AP-20A-27	132	5.20	63	2.48
AP-20A-30	137	5.39	65	2.56
AP-20A-32	139	5.47	66	2.60
AP-20A-40	148	5.83	70	2.76



## ORDERING INFORMATION



Viewed from drive shaft end